



# Pine Technical & Community College

Pine Technical & Community College (PTCC) provides students with a high-quality accelerated education at an affordable rate. Through funding from Pine County and private philanthropy, all county high school students can attend PTCC tuition free and receive additional funds for books and supplies. PTCC offers a number of unique programs including one of the nation's only degrees in gunsmithing and firearms technology and a nursing program that has been recognized as one of the best in the state. To deal with a shortage in the childcare industry, PTCC developed a low-cost, accelerated online program for childcare workers, which has been replicated at colleges across Minnesota.

## Contributing to the Minnesota Economy

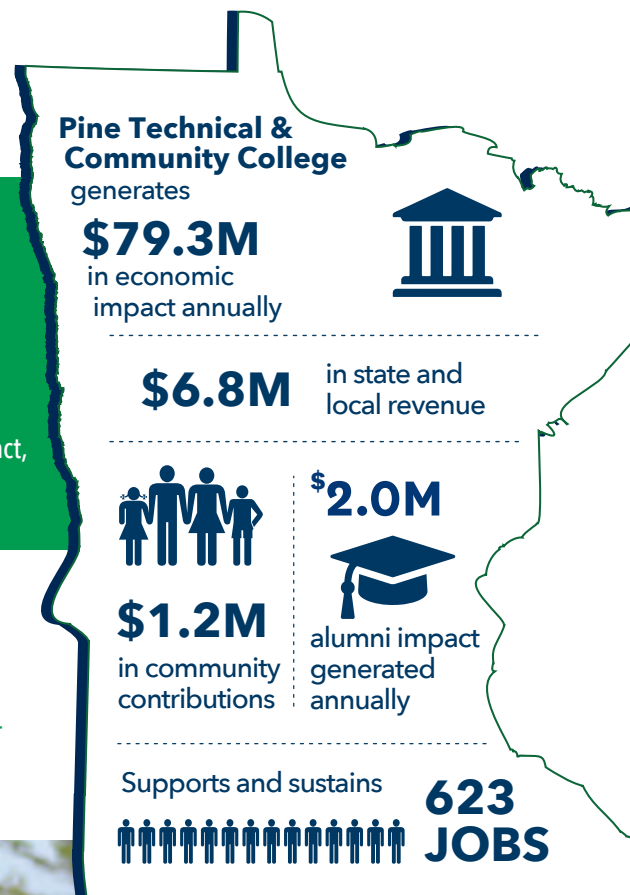
- Pine Technical & Community College generates an annual impact of **\$79.3 million**. This includes a direct impact of \$46.5 million and an indirect/induced impact of \$32.8 million.
- Spending on operations and capital projects generates \$23.9 million of the total impact, and student and visitor spending generates \$55.3 million.

## Supporting and Sustaining Jobs in the State

- Pine Technical & Community College supports and sustains 623 Minnesota jobs (454 direct and 169 indirect/induced). These jobs are at the college and in the community - 104 direct jobs are employees of Pine Technical & Community College.

## Generating Local and State Tax Revenue

- The combined tax impact of Pine Technical & Community College, its suppliers, students and visitors is **\$6.8 million**. This includes a direct impact of \$4.8 million and indirect/induced impact of \$2.0 million.





## Alumni in the State Generate Additional Impact

An estimated 7,320 Pine Technical & Community College alumni earned a credential or associate degree over the past 10 years and still live and work within Minnesota. Of this total, 552 Pine Technical & Community College alumni with an associate degree live and work in the state. These graduates are an integral part of the Minnesota workforce, impacting the economy not only through their spending but also through the extra earning power generated by their Pine Technical & Community College degree.

Based on the 552 associate degree recipients, Pine Technical & Community College alumni generate \$2 million in economic impact for Minnesota and support and sustain 11 jobs. Over their 40-year career, Pine Technical & Community College alumni will generate \$81.4 million in the economy. These impacts are based on the added value of earning a degree from Pine Technical & Community College, not alumni full wages. This impact is based upon the total number of alumni in Minnesota 10 years after graduation.



### Making a Difference in the Community and State

Each summer, Pine Technical & Community College participates in the Pine City Area Chamber of Commerce's Freedom Fest celebration. The college hosts a bar-b-que, where free lunch is provided to more than 1,000 attendees, and a car show. The event also features college tours, providing a way for the college to both support the community and showcase its many educational opportunities.



## Pine Technical & Community College Student Profile



**2,478**

students enrolled in fy2022



**322**

graduates each year



**46.1%**

pell recipients



**15%**

first-generation students attending college



**1:20**

20 students per full time faculty member



**49**

students currently enrolled are veterans

An estimated **\$1,229,423** in charitable donations and volunteer services are generated annually by faculty, staff, and students.

- **\$148,344** donated to local charitable organizations by faculty, staff, and students.
- **\$1,081,079** of volunteer time by faculty, staff, and students.



Pine Technical & Community College



MINNESOTA STATE



Prepared by *Parker Phillips*  
assess. analyze. assist!  
January 2023

ACCESS THE FULL REPORT [MINNSTATE.EDU/IMPACT](http://MINNSTATE.EDU/IMPACT)