



St. Cloud Technical & Community College

Through state-of-the-art technology, extensive scholarship opportunities, and collaborative faculty development, St. Cloud Technical & Community College (SCTCC) prepares students to meet the demands of a growing region. SCTCC's excellent placement rate, with most students getting jobs upon graduation, is supported by innovative lessons taught in the classrooms. Faculty members collaborate with community advisory boards to ensure classroom lessons and practicums are relevant, and students participate in national skills challenges. More than 75 percent of students come from the five surrounding counties and choose to stay in the region upon graduation, further contributing to a close college/community relationship.

Contributing to the Minnesota Economy

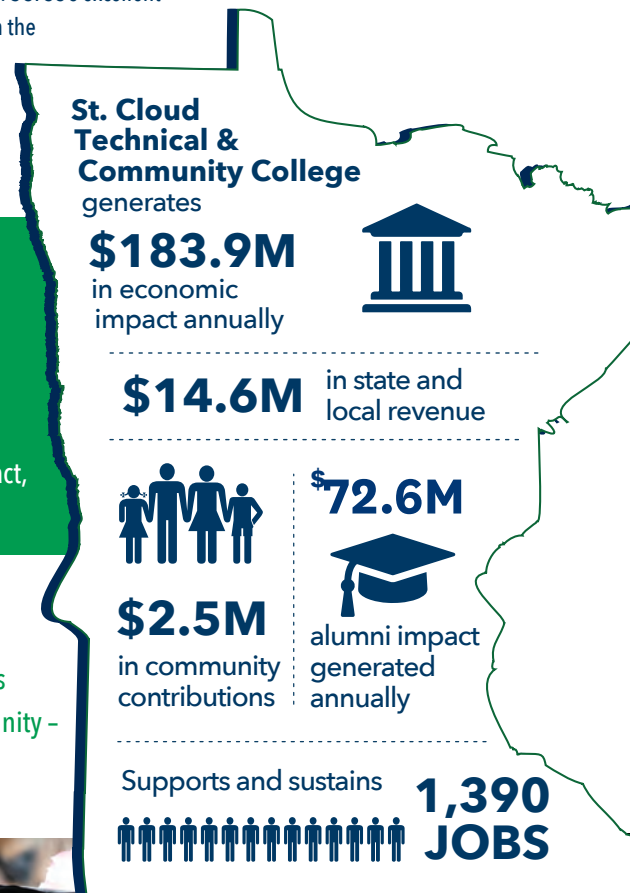
- St. Cloud Technical & Community College generates an annual impact of **\$183.9 million**. This includes a direct impact of \$104.5 million and an indirect/induced impact of \$79.4 million.
- Spending on operations and capital projects generates \$78.6 million of the total impact, and student and visitor spending generates \$105.3 million.

Supporting and Sustaining Jobs in the State

- St. Cloud Technical & Community College supports and sustains 1,390 Minnesota jobs (979 direct and 411 indirect/induced). These jobs are at the college and in the community - 313 direct jobs are employees of SCTCC.

Generating Local and State Tax Revenue

- The combined tax impact of St. Cloud Technical & Community College, its suppliers, students and visitors is **\$14.6 million**. This includes a direct impact of \$9.8 million and indirect/induced impact of \$4.8 million.



Alumni in the State Generate Additional Impact

An estimated 19,680 St. Cloud Technical & Community College alumni living and working in Minnesota are continuing to make a positive economic impact after graduation. These graduates are an integral part of the Minnesota workforce, impacting the economy not only through their spending but also through the extra earning power generated by their St. Cloud Technical & Community College degree.

Each year, St. Cloud Technical & Community College alumni generate \$72.6 million in economic impact for Minnesota and support and sustain 388 jobs. Over their 40-year career, St. Cloud Technical & Community College alumni will generate \$2.9 billion in the economy. These impacts are based on the added value of earning a degree from St. Cloud Technical & Community College, not alumni full wages. This impact is based upon the total number of alumni in Minnesota 10 years after graduation.

Making a Difference in the Community and State

St. Cloud Technical & Community College plays an essential role in growing Minnesota's economy through talent development and opening the doors of educational opportunity to all Minnesotans. The college gives back to the community in a multitude of ways. St. Cloud Technical & Community College is co-located with Career Solutions and Minnesota Department of Employment and Economic Development and works in partnership with them to help dislocated workers.



Alumni at St. Cloud Technical & Community College actively give back to the college community. In addition to financial support, alumni serve on advisory committees, participate in accreditation review for career and technical programs, and help connect faculty and students with business and industry partners. A recent graduate of the college's advertising program provided her traveling art exhibit about mental health and wellness to the college to display during suicide awareness month.



St. Cloud Technical & Community College Student Profile



4,780

students enrolled in fy2022



1,009

graduates each year



43.1%

pell recipients



24.4%

first-generation students attending college



1:20

20 students per full time faculty member



184

students currently enrolled are veterans

An estimated **\$2,478,778** in charitable donations and volunteer services are generated annually by faculty, staff, and students.

- **\$346,711** donated to local charitable organizations by faculty, staff, and students.
- **\$2,132,067** of volunteer time by faculty, staff, and students.

ST. CLOUD
TECHNICAL & COMMUNITY COLLEGE



prepared by *Parker Phillips*
analyst, analyst
January 2023



MINNESOTA STATE

ACCESS THE FULL REPORT [MINNSTATE.EDU/IMPACT](https://minnstate.edu/impact)