



# Fond du Lac Tribal & Community College

By integrating its core values of respect, integrity, stewardship, innovation, and compassion into every facet of academic and student life, Fond du Lac Tribal & Community College (FDLTCC) offers a unique educational opportunity. FDLTCC is jointly governed by the Fond du Lac Band of Lake Superior Chippewa and Minnesota State, making it the only institution in the nation that is both a tribal college and a state community college. The college offers two-year associate degrees and short-term certificates across a wide range of program areas and a Bachelor of Science degree in Elementary Education that develop cultural awareness and responsibility. Fond du Lac Tribal & Community College works to preserve Indigenous language and support environmental sustainability while creating culturally conscious members of the workforce in the fields of education, nursing, law enforcement, and other disciplines.

## Contributing to the Minnesota Economy

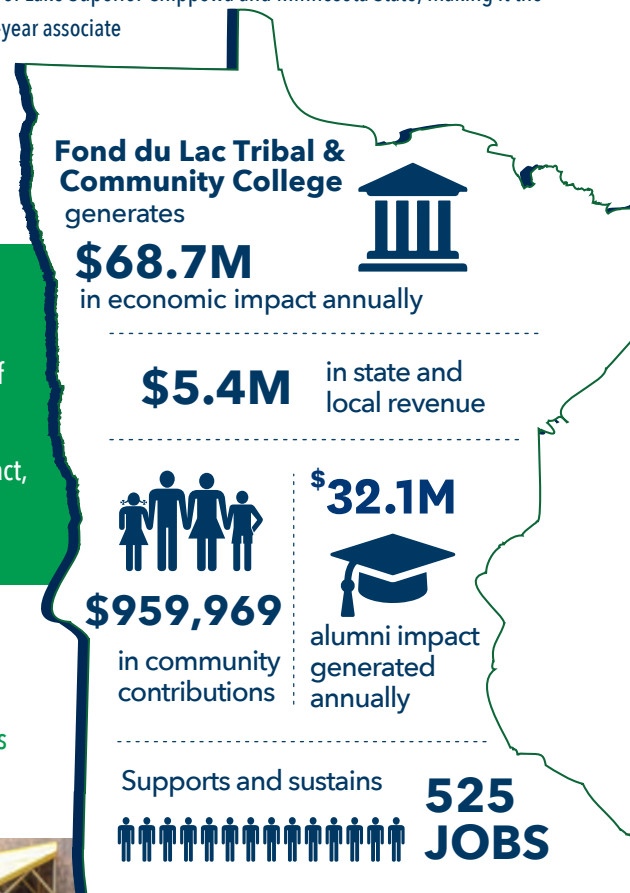
- FDLTCC generates an annual impact of **\$68.7 million**. This includes a direct impact of \$39.3 million and an indirect/induced impact of \$29.5 million.
- Spending on operations and capital projects generates \$28.9 million of the total impact, and student and visitor spending generates \$39.8 million.

## Supporting and Sustaining Jobs in the State

- FDLTCC supports and sustains 525 Minnesota jobs (372 direct and 153 indirect/induced). These jobs are at the college and in the community - 117 direct jobs are employees of FDLTCC.

## Generating Local and State Tax Revenue

- The combined tax impact of FDLTCC, its suppliers, students and visitors is **\$5.4 million**. This includes a direct impact of \$3.6 million and indirect/induced impact of \$1.8 million.



## Alumni in the State Generate Additional Impact

An estimated 8,696 Fond du Lac Tribal & Community College alumni living and working in Minnesota are continuing to make a positive economic impact after graduation. These graduates are an integral part of the Minnesota workforce, impacting the economy not only through their spending but also through the extra earning power generated by their Fond du Lac Tribal & Community College degree.

Each year, Fond du Lac Tribal & Community College alumni generate \$32.1 million in economic impact for Minnesota and support and sustain 171 jobs. Over their 40-year career, Fond du Lac Tribal & Community College alumni will generate \$1.3 billion in the economy. These impacts are based on the added value of earning a degree from Fond du Lac Tribal & Community College, not alumni full wages. This impact is based upon the total number of alumni in Minnesota 10 years after graduation.

## Making a Difference in the Community and State

The social and cultural impact of Fond du Lac Tribal & Community College is significant. As a federal Land Grant institution, the college works to meet a three-part mission of teaching, research, and service to people, primarily via programs coordinated through the college's Environmental Institute. The spectacular campus is home to notable outdoor public art and houses a collection of American Indian art in the Ojibwemowining Resource Center, which also specializes in Anishinaabe language recordings and preservation. There is no doubt that Fond du Lac Tribal & Community College is a statewide asset making a lasting impact on the social and cultural fabric of Minnesota.



Fond du Lac Tribal & Community College also prepares students for life after college. Law enforcement graduates are hired by local and regional police departments, nursing graduates are employed at area hospitals/clinics and human services graduates work for local and tribal behavioral health programs and treatment centers. A respect for different perspectives and ways of life, which is foundational at Fond du Lac Tribal & Community College, stays with graduates as they make an impact in the community.



## Fond du Lac Tribal & Community College Student Profile



**1,860**

students enrolled in fy2022



**197**

graduates each year



**63.1%**

pell recipients



**14%**

first-generation students attending college



**1:15**

15 students per full time faculty member



**31**

students currently enrolled are veterans

An estimated **\$959,969** in charitable donations and volunteer services are generated annually by faculty, staff, and students.

- **\$132,329** donated to local charitable organizations by faculty, staff, and students.
- **\$827,640** of volunteer time by faculty, staff, and students.

Fond du Lac  Tribal & Community College



ACCESS THE FULL REPORT [MINNSTATE.EDU/IMPACT](http://MINNSTATE.EDU/IMPACT)

prepared by *Parker Phillips*  
Associate Analytics Manager  
January 2023