



**Saint Paul College Academic Excellence Renovation - 123474  
REQUEST FOR Proposals (RFP) for Design Services SDSB 24-09  
April 12, 2024**

**ADDENDUM #1**

*Addendum #1 is added and shall become part of the RFP document posted on April 1, 2024.*  
**Respondents shall acknowledge receipt of this Addendum** on their proposal as noted in the RFP.

- 1. The Sign-In sheet for the mandatory project informational meeting, held on Wednesday, April 10, 2024 is incorporated as Attachment #1.**
  
- 2. The Presentation intended for the mandatory project informational meeting is incorporated as Attachment #2.** As the images were unavailable due to technology issues, these are what was discussed, and the maps reflect the areas toured as part of the meeting.
  
3. Summary of Attachments:
  - a. Attachment #1: Mandatory project informational meeting Sign-In Sheet.
  - b. Attachment #2: PowerPoint Presentation discussed at information meeting, with images.

**END OF ADDENDUM #1**









January 2019

---

# Pre-Proposal Walk Through

Academic Excellence Renovation and Renewal

Presented by: Scott Wilson, VP Finance & Operations, SPC

Matt Williams, Director of Facilities, SPC

Terry Olsen, Facilities Program Manager, Minnesota State

# Saint Paul College Campus



# Project Overview

- The SPC Academic Excellence Project reorganizes, repurpose, and renews existing underutilized classrooms and computer labs into new, flexible learning environments which are easy to navigate, break down barriers to access and support the Saint Paul College programs and people engaged most in student success.



# Existing Conditions

- ROOM 1340: Advising, Counseling/Mental Health Services
- Built-in monumental service counter is imposing creating a physical and visual barrier to students resulting in an intimidating experience for those seeking help and assistance.



- Theater  
With over \$400,000 in deferred maintenance, the significantly under utilized theater space will be repurposed and remodeled as the central hub of the new one-stop student services center. The one stop will become the major node along a new way-finding path through the heart of campus linking west to east and removing barriers to student access along the way.





# Existing Conditions

- STAIRWAYS and 2ND-4TH FLOOR HALLWAYS & PUBLIC AREAS
- Many areas of campus show deteriorating, discolored and damaged ceiling tile and diffusers. Stained ceiling tile appears to reflect past or recent moisture leaks. Existing lighting is old, inefficient fluorescent lighting with discolored lenses. Many locations especially in the east tower show areas of threadbare carpet long past its normal lifespan. Singly and together these aesthetic issues do not present an inviting and welcoming image for prospective students, their families or visitors.



# Existing Conditions

## Restrooms

Typical condition of restrooms in East Tower. Discolored, deteriorating and rusting toilet partitions, poor lighting, damaged plastic laminate counters and stained and deteriorating ceiling tiles.

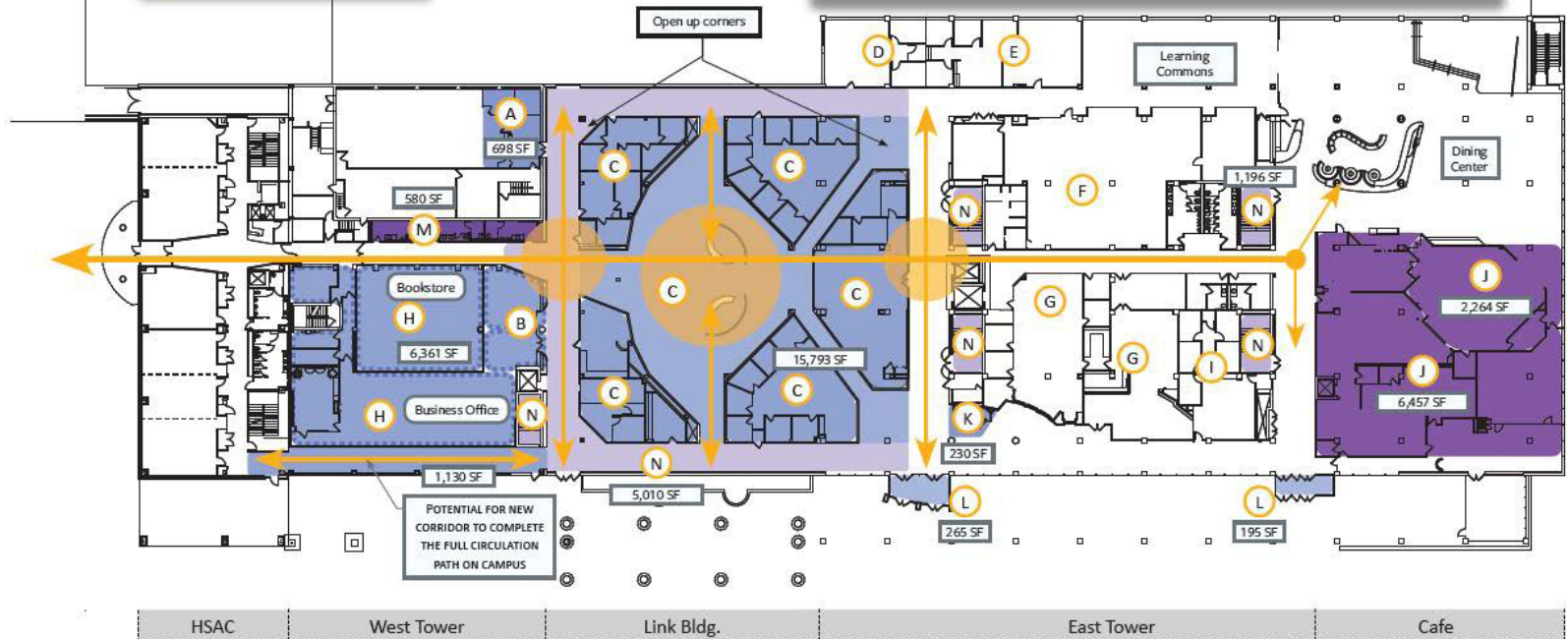


# FIRST FLOOR

D. PLAN DIAGRAM: FIRST LEVEL

	Restrooms & Kitchen
	Corridors & Stairwells
	Renovation
	Optional Program Area

A	IT Help Counter	H	Bookstore   Business Office
B	C-Store   Coffee Shop   Storage	I	Power of You (recently renovated)
C	One Stop   Student Services	J	Servery   Food Service Kitchen
D	TRIO	K	New Public Safety   Welcome Desk
E	Student Life and Diversity Office (recently renovated)	L	Entry (remodel)
F	Library	M	Restrooms
G	Existing Bookstore & Business Office	N	Stairwells   Corridors



0' 10' 20' 40' 80'



FIRST FLOOR **1**

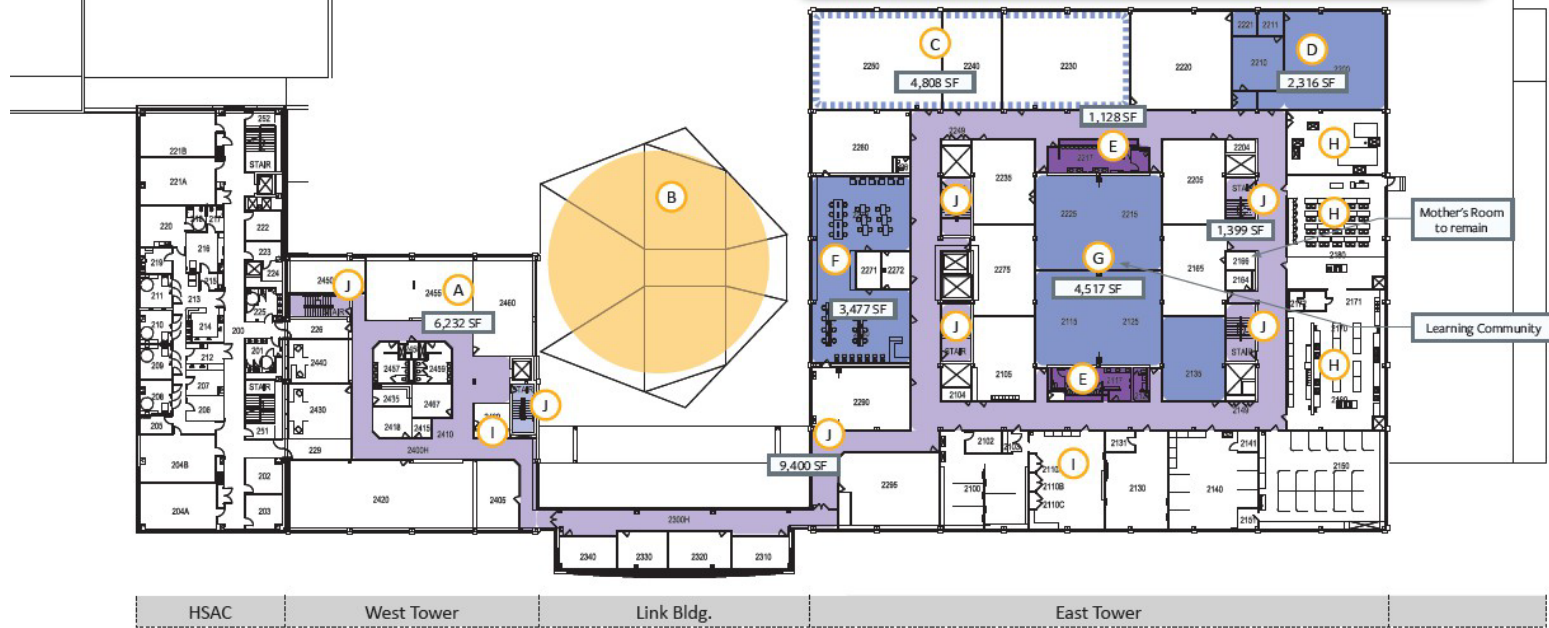


# SECOND FLOOR

D. PLAN DIAGRAM: SECOND LEVEL



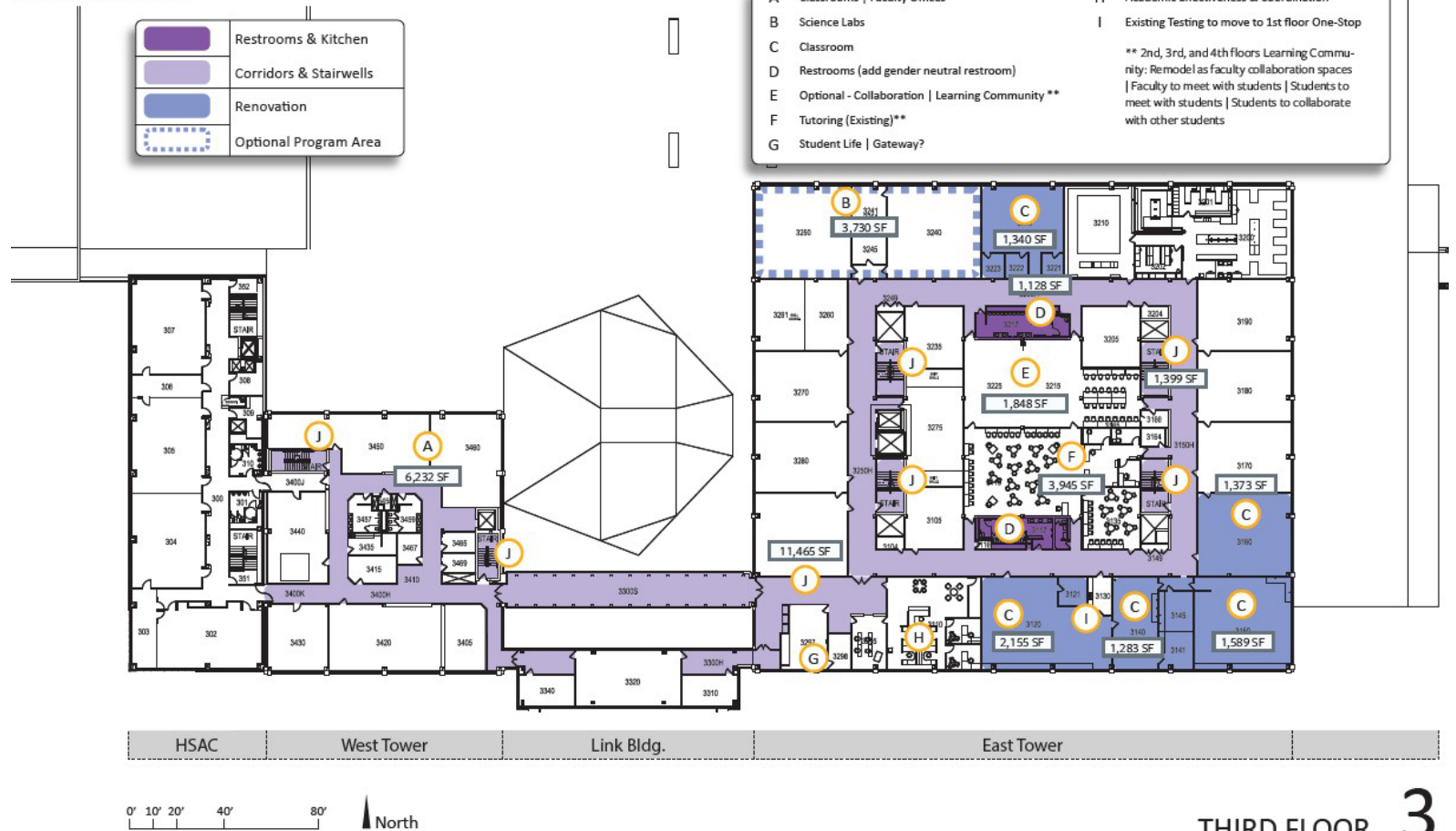
- |   |  |  |                         |
|---|--|--|-------------------------|
| A | Classrooms   Faculty Offices   | H  | Culinary                |
| B | Area of new One-Stop main node below with new clerestory windows to flood the space with daylight. | I  | Nursing Labs (Existing) |
| C | Esthetics (Ventilation improvements)   | J  | Stairwells   Corridors  |
| D | Classroom  | ** 2nd, 3rd, and 4th floors Learning Community: Remodel as faculty collaboration spaces   Faculty to meet with students   Students to meet with students   Students to collaborate with other students |                         |
| E | Restrooms (add gender neutral restroom)  |  |                         |
| F | Cosmetology  |  |                         |
| G | Optional - Collaboration   Learning Community**  |  |                         |



SECOND FLOOR **2**

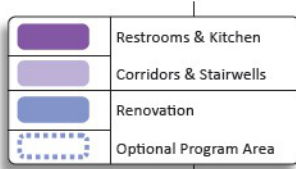
# THIRD FLOOR

D. PLAN DIAGRAM: THIRD LEVEL



# FOURTH FLOOR

D. PLAN DIAGRAM: FOURTH LEVEL



- |   |   |
|---|---|
| A Administration  | H Classroom   |
| B 4th floor Faculty Office to move here to allow Admin. in West Tower                     | I Remodel in 2020   |
| C Existing Music Room moves to Lower Level   Childcare Program moves here from West Tower | ** 2nd, 3rd, and 4th floors Learning Community: Remodel as faculty collaboration spaces   Faculty to meet with students   Students to meet with students   Studentes to collaborate with other students |
| D Restrooms (add gender neutral restroom)   |   |
| E Optional - Collaboration   Learning Community **  |   |
| F Classroom   |   |
| G Classroom   |   |



HSAC      West Tower      Link Bldg.      East Tower



# Thank you!

- QUESTIONS?

